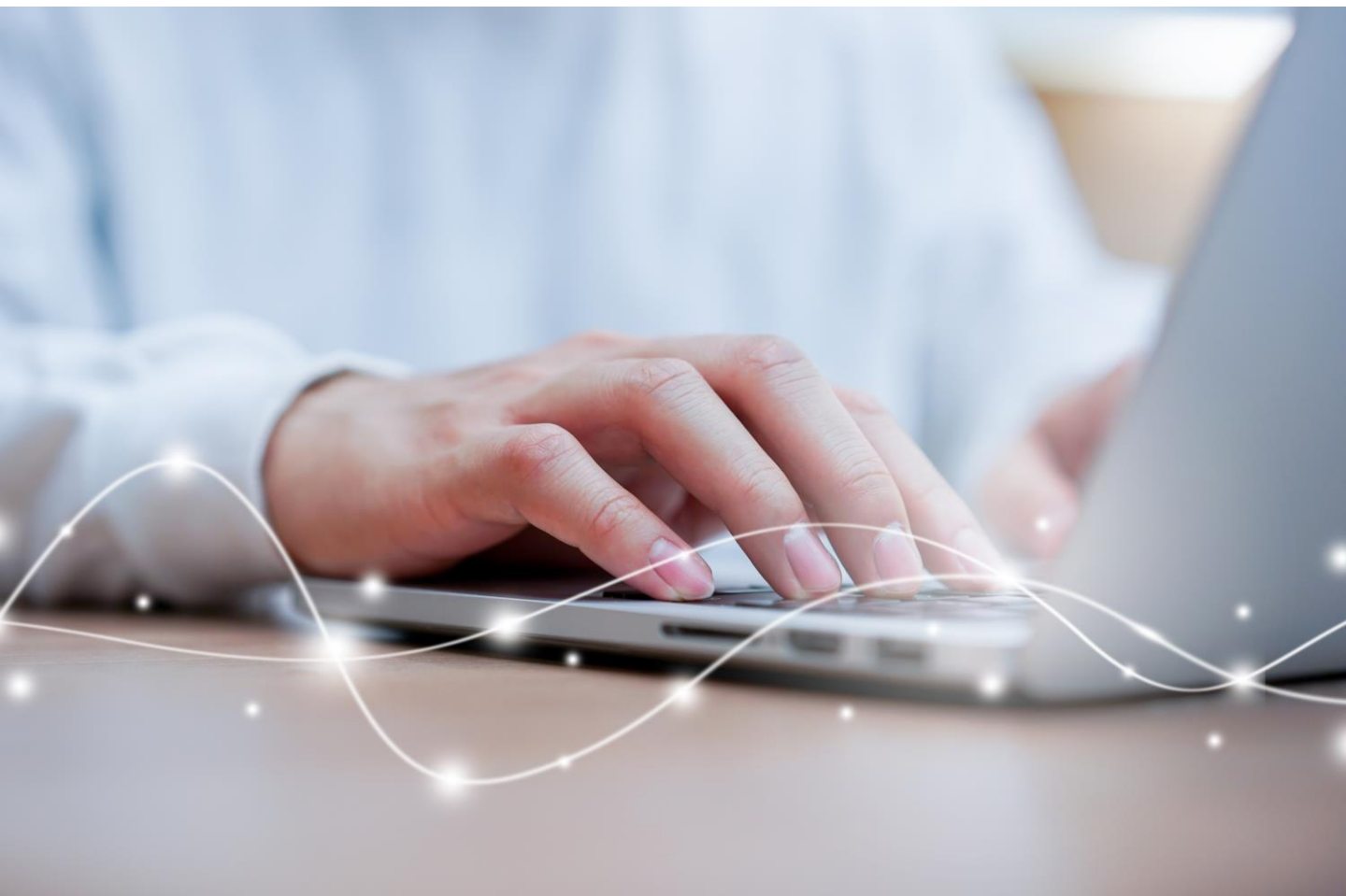


turimbi data manager – the easy Cloud solution

Easy result management

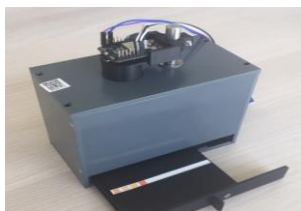
- Easy – Use on any device
- Flexible – Use with any method or test
- Versatile – Share data with stakeholders





Welcome to easy result management

turimbi scientific data exchange sde is a cloud-based data collection and exchange platform for professional users as well as analytical laymen. It combines elements of classic laboratory information systems with social media ideas. The result is an easily accessible tool that allows to create, use and share meaningful test results.



Use on any device

turimbi sde is a WebApp that runs in the cloud. You can easily access it by simply using your web browsers.

- Smartphone or tablet
- Desktop PC (Windows, Linux, iOS)
- Dedicated instruments



Use with any method or test

Originally developed for the turimbi strip reader, turimbi sde is designed to handle data from all kinds of instruments or sources.

- Test strips
- Photometer or other instrument readings
- Sample collection and identification system



Use and share data with any group

Select a method from the method store into your "MyMethods" and name it according to your needs.

- Use it just for your personal data collection. This is ideal if you need to document your regular tests.
- Invite other users to collect data with the same method, share and comment results within the group. This is the ideal tool for crowd sourcing data, for example nitrate values in drinking water all over Germany.
- Create a managed group where all participants contribute data but only managers see them. This ideal if you have to ensure that certain conditions are met, for example that disinfection baths are still active.

